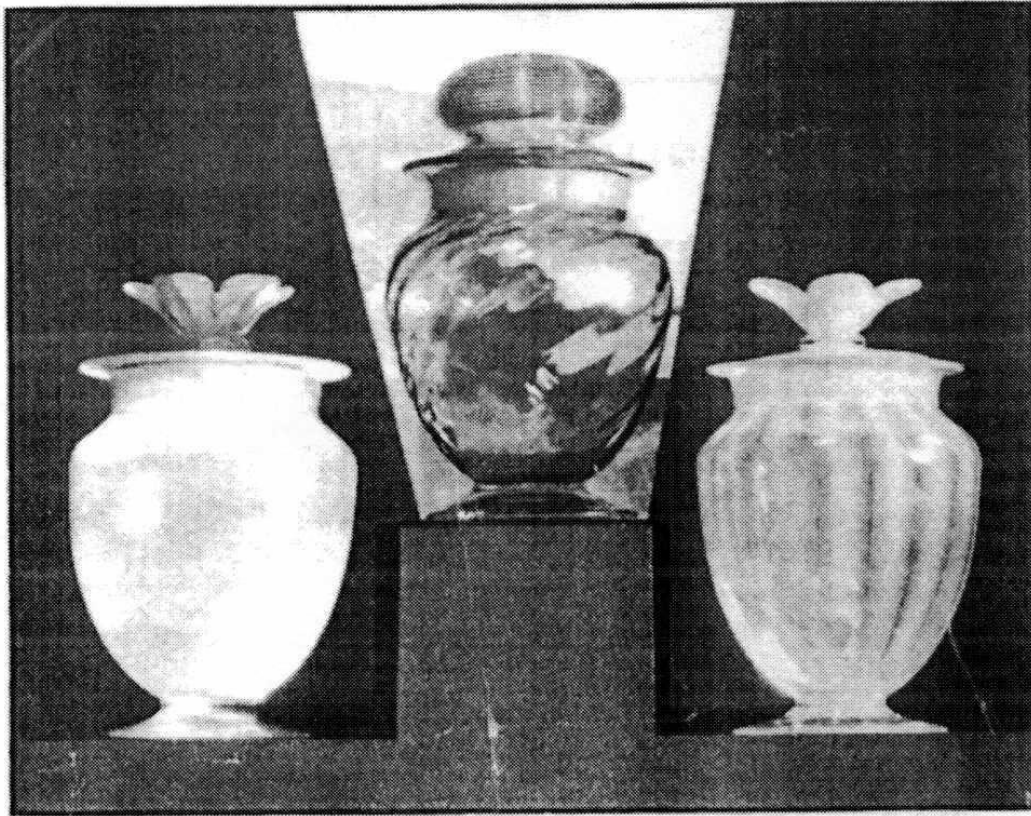
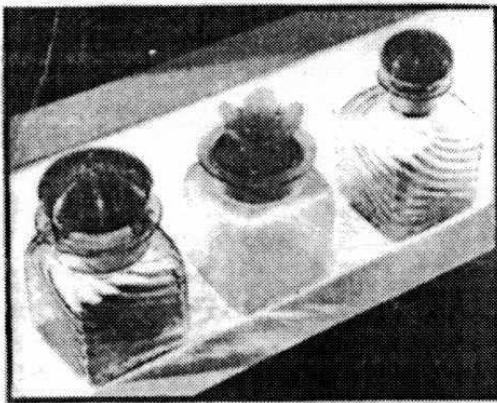


Age-old Beauty in Glass of Modern Usefulness

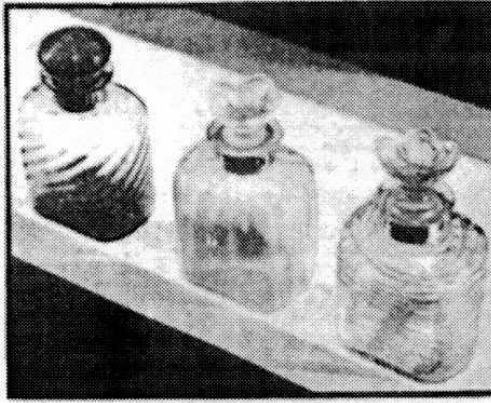
6733



6590



2



3

6887

(see other side for descriptions)

Figure 1 Age-Old Beauty (front)

No. 1—Bath salts jars that are also objets d'art—

From left to right:

Of verre de soie with a flower stopper of jade green or French blue, 6½" tall.

Of spiral glass in crystal, French blue, Bristol yellow, and Pomona green; in grenadine.

A jar of lovely clouded glass in poppy, jade, or orchid, No. 6733.

No. 2—Large necked bottle of spiral crystal, Pomona green, French blue, Bristol yellow.

In orchid or grenadine.

Large necked bottle of verre de soie with flower stopper in jade green or French blue.

Small necked bottle in Bristol yellow, Pomona green, French blue, or crystal.

In grenadine or orchid, No. 6590.

No. 3—Beautiful little bottles, suggesting many uses.

From left to right:

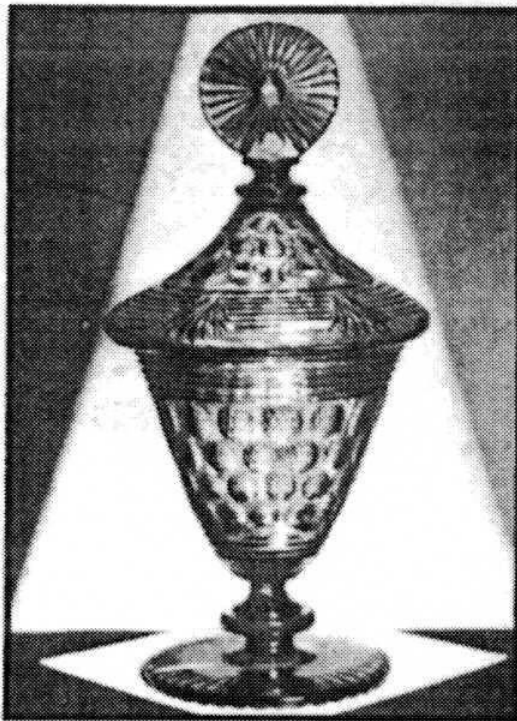
Small necked bottle in spiral twist, 5" tall, in crystal, French blue, Bristol yellow, and Pomona green; in grenadine or orchid.

Small necked bottle of opalescent glass with pink flower stopper.

Small necked bottle in crystal, reeded in rose, No. 6887.

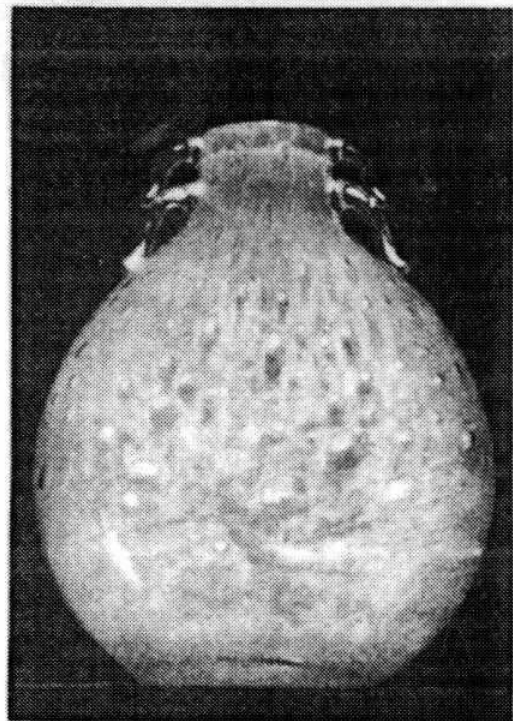


Figure 2 Age-Old Beauty (back)



1

6636



6898

2

Ever Lovely Forms with the Sparkle of Starlight



6857
Bristol

6649
Thistle

3
6857
Semper

6457
Rostrand

6457
Cameo

Figure 5 Ever Lovely Forms (front)

No. 1—A handsome jar in crystal or amethyst with the charm of the unusual, 16" high, No. 6636.

No. 2—Of beautiful Cluthra glass in rose, blue, green, or black—a jar of Greek design, No. 6898.

No. 3—From left to right:
Crystal, etched in Bristol design, 20" high, No. 6857.

Of rose quartz, sculptured in Thistle design, No. 6649.

Of rose glass etched in Semper design, No. 6857.

Rose Quartz, finely sculptured, 15" high, in Rostrand design, No. 6457.

Of rose cameo, beautifully etched, 16" high, in Cameo design, No. 6457.



Figure 6 Ever Lovely Forms (back)

Flower Containers in Unusual Forms and Subtle Shadings



(see other side for descriptions)

Figure 7 Flower Containers (front)

No. 1—An amethyst vase of classic grace, with teardrop trim, 15" high, No. 6585.

A bowl like an open flower, in verre de soie, reeded in rose, green, or blue, No. 6592.

No. 2—An exquisite flower bowl of heavy cut crystal, blue moss-agate shading into pink, No. 6713.

No. 3—A little oval flower container of jade green glass, No. 6415.

No. 4—An interesting vase of Persian blue, reeded in yellow, 12" tall, No. 6776.



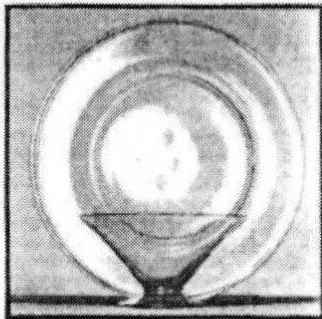
Figure 8 Flower Containers (back)



1 A B C D E F G H I J K L M N O P Q
6844 6792 6841 6705 6567 3551 6333 6603 6794 3551 6596 3551 6401 3551 6583 6565 3140

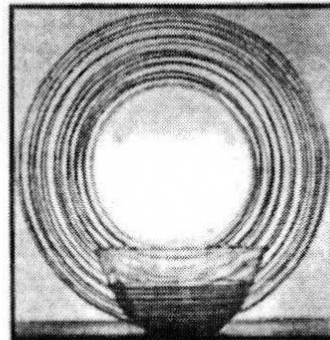
Hand-wrought Forms of Patrician Beauty

2028



2

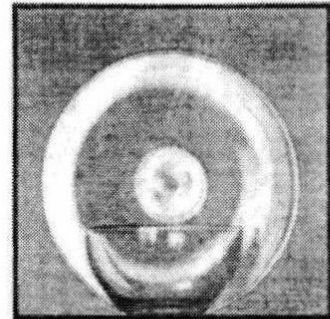
5154



3

2028

6603



4

6869

Figure 9 Hand-Wrought Forms (front)

No. 1—Reading from left to right:

- ^a—A lovely goblet of amethyst glass, engraved in the Spray design, No. 6844.
- ^b—A handsome goblet of Bristol yellow glass, finely cut, No. 6792.
- ^c—Beautifully chased and engraved in the St. Louis design is this goblet of crystal and amethyst, No. 6841.
- ^d—A crystal goblet of slender grace, engraved in the Blue Tree design, No. 6705.
- ^e—An exquisite goblet of engraved rock crystal, Melba design, No. 6567.
- ^f—Graceful grapefruit glass with liner, in crystal with rosa or green stem, engraved in the Van Dyke design, No. 3551.
- ^g—A colorful cocktail glass in Spanish green, reeded and bubbled, No. 6333.
- ^h—A champagne glass of sparkling crystal, reeded in black, No. 6603.
- ⁱ—A sturdy goblet of cut and polished Bristol yellow, No. 6794.
- ^j—A footed, half-pint tumbler, Bristol yellow reeded in black, No. 3551.
- ^k—A cocktail glass of lovely rock crystal,

finely engraved, Midana design, No. 6596.

- ^l—A cocktail glass with rosa or green stem and crystal cup, No. 3551.
- ^m—An unusual goblet of Bristol yellow, engraved in Autumn design, No. 6401.
- ⁿ—A striking goblet of Bristol yellow, reeded in black, No. 3551.
- ^o—A goblet in Spanish green, delicately engraved in Mystic design, No. 6583.
- ^p—A Marina Blue goblet, engraved in the Fountain design, No. 6565.
- ^q—A goblet of glowing ruby, finely engraved, No. 3140.

No. 2—A graceful amber finger bowl with plate to match. The bowl, No. 5154.
The plate, 8½", No. 2028.

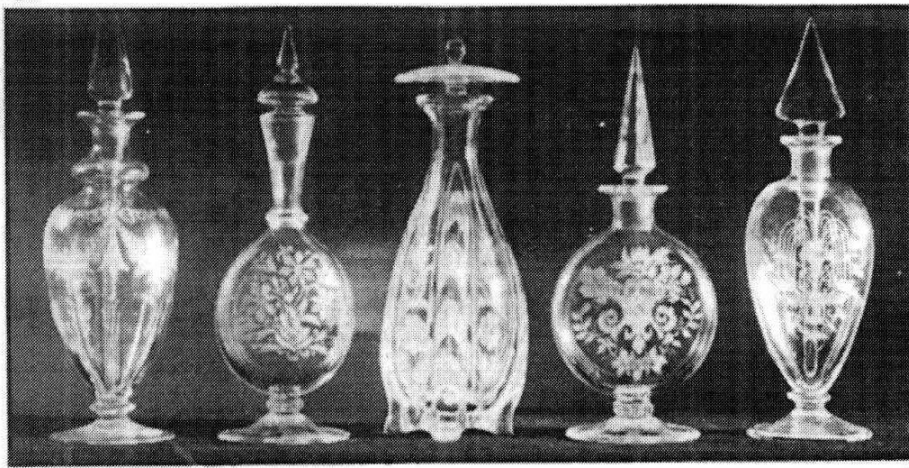
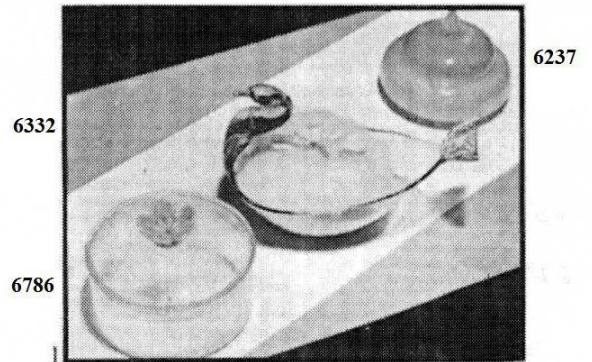
No. 3—A reeded finger bowl and plate of glass.
Bowl, No. 6603.
Plate, 8½", No. 2028.

No. 4—A crystal finger bowl and plate to match, No. 6869.



Figure 10 Hand-Wrought Forms (back)

Jade · Alabaster and
Crystal enliven
the Modern Boudoir



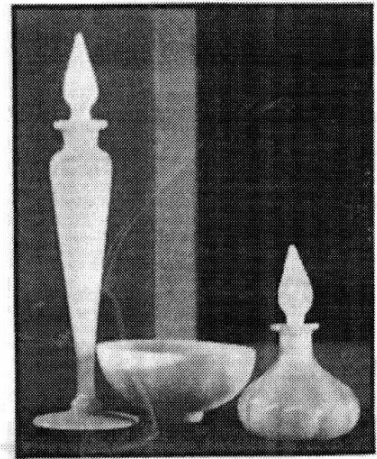
6677
Festoon

6673
Mystic

6675
Rajah

6674
Autumn

6672
Fountain



6237

6896

1455

Figure 11 Jade - Alabaster & Crystal

No. 1—A powder box in verre de soie with a flower handle, No. 6786. — *\$ 2.50 each.*

A glass swan to hold a downy puff. In crystal, yellow, or green, 9" long, No. 6332. *\$ 7.00 each.*

A powder box in lovely rosaline, No. 6237. — *\$ 5.00 each.*

No. 2—Exquisite perfume bottles of engraved crystal, 8" to 10" high. From left to right:

\$ 6.50 Each ← The festoon design, No. 6677.

\$ 6.50 Each ← Mystic pattern, No. 6673.

The Rajah design, No. 6675. — *\$ 12.50 Each*
Autumn pattern, No. 6674. — *6.00 Each*
Fountain design, No. 6672. — *8.00 Each*

No. 3—Bottles and bowls that glow like lighted candles. From left to right:

Perfume bottle in jade green with white drip stopper, 10" tall, No. 6237. — *\$ 1.50 each.*

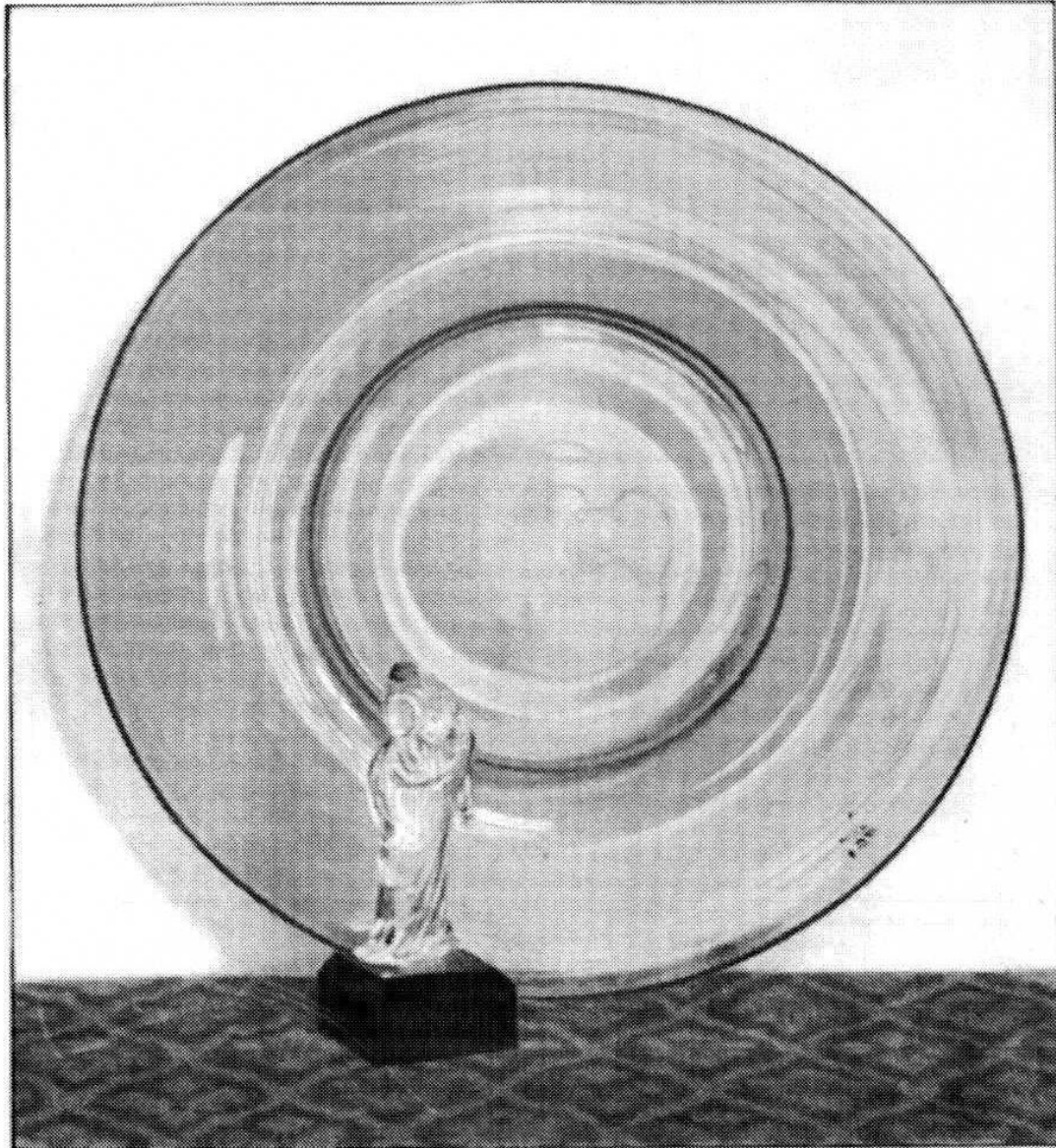
Oval soap bowl in jade green, No. 6896. — *\$ 1.50 each.*

Small perfume bottle with drip stopper, in jade green, No. 1455. — *\$ 1.05 each*



Figure 12 Jade - Alabaster & Crystal (back)

Modern Objets d'Art in Crystal and Glass



5121

3269

Figure 13 Modern Objects d'Art (front)

A beautiful plate of gold
ruby glass with a blue edge,
22" diameter, No. 5121.

2325^{ea}

A figure of crystal on a
block of black glass, depict-
ing the Japanese Goddess
who stands at the gate of
Heaven to note the names
of all who enter. She her-
self remains outside until
the last soul on earth is
within the gates, No. 3269.

S/S - 175^{ea}

L/S - 225^{ea}



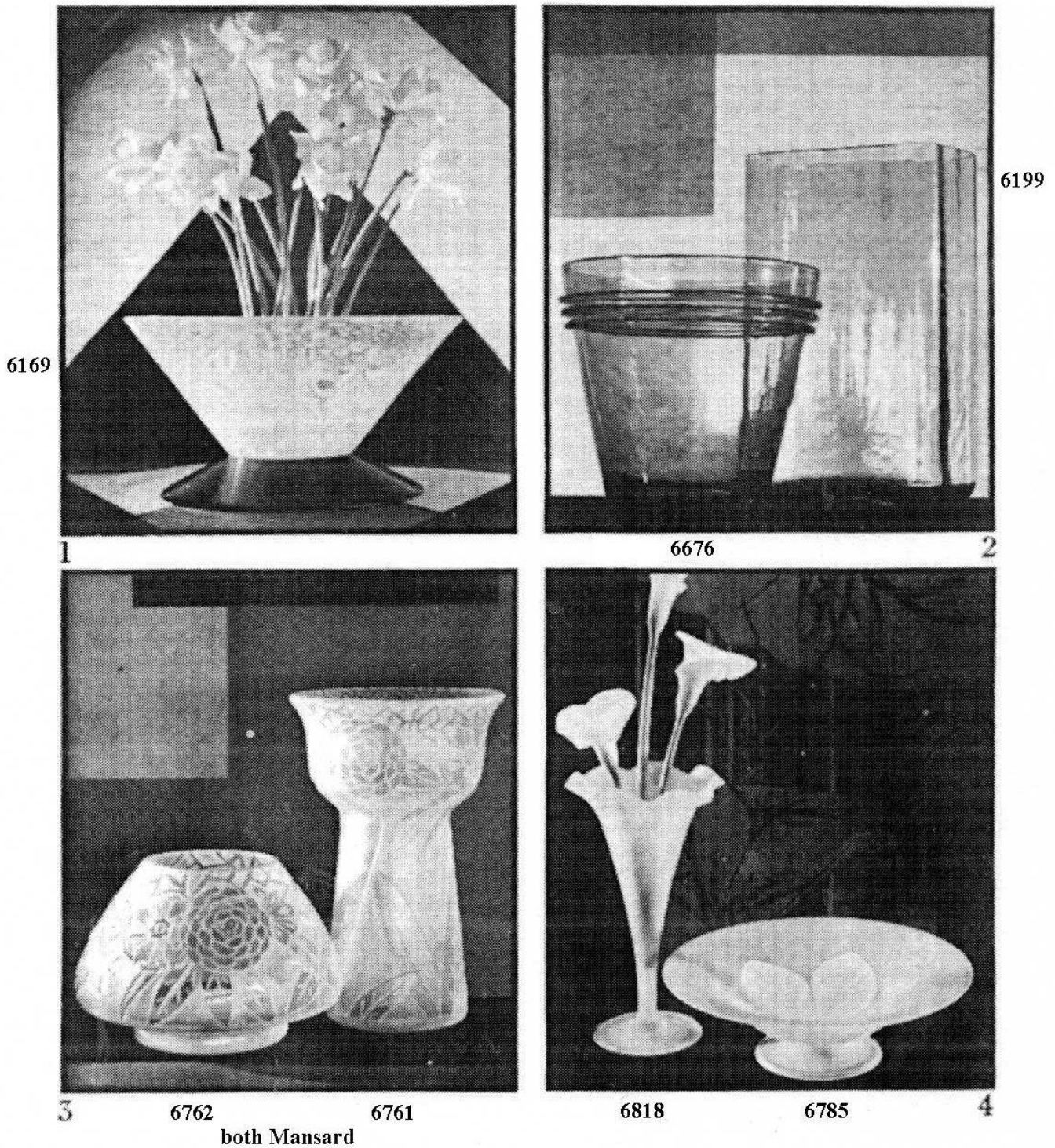
3269 Figure + Black Box (hollow) for lighting

S/S - 165^{ea}

L/S - 200^{ea}

Figure 14 Modern Objects d'Art (back)

New Flower Bowls and Vases Exquisite as Rare Glasses of Old



(see other side for descriptions)

Figure 15 New Flower Bowls & Vases

No. 1—A smart modern vase of *10⁰⁰ ea*
Cluthra, 15" diameter, with teak-
wood base, No. 6169. *6⁰⁰ ea*

No. 2—A vase of simple charm *5/5 - 2⁰⁰ ea*
in clear amber, Bristol yellow, *4/5 - 3⁰⁰ ea*
French blue, Pomona green, or jade
green, 6" high, No. 6676.

A rectangular vase in crystal,
amber, Bristol yellow, Celeste blue,
or Pomona green, No. 6199. - *2⁰⁰ ea*

No. 3—A bowl of crystal etched
Mansard, 7" diameter, No. 6762. - *7⁰⁰ ea*

A vase of crystal etched Man-
sard, No. 6761. *10⁰⁰ ea*

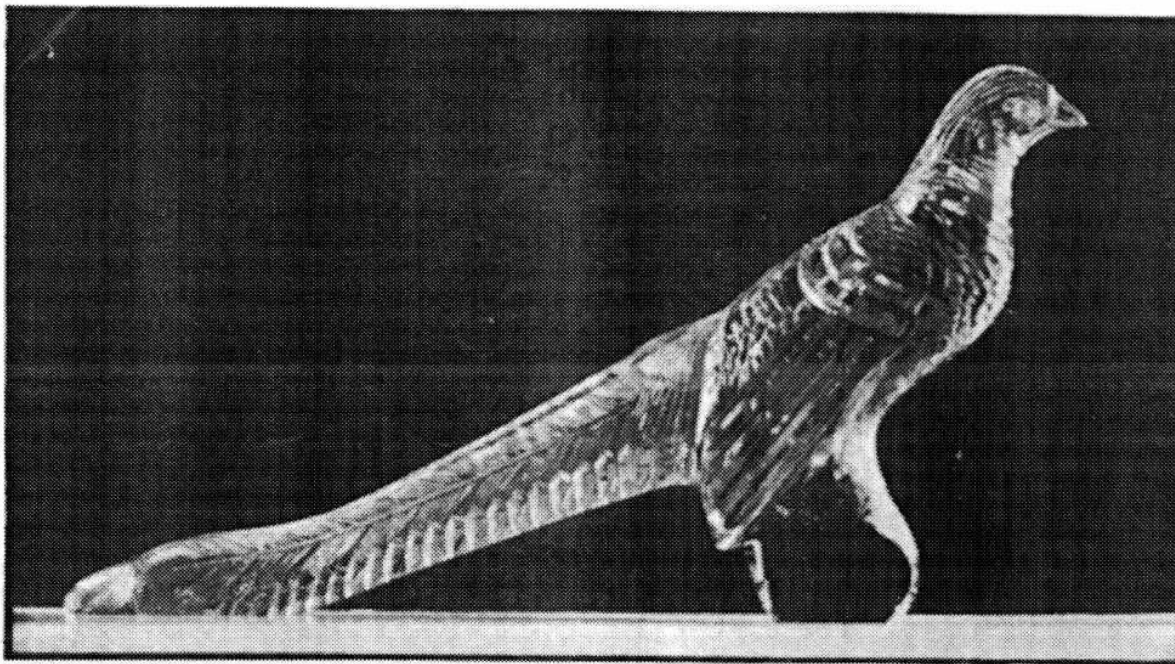
No. 4—A vase of frost-like
beauty in white Florentia glass,
decorated in green or rose, 12"
high, No. 6818. *5⁵⁰ ea*

A low bowl to match, No. 6785. - *6⁰⁰ ea*

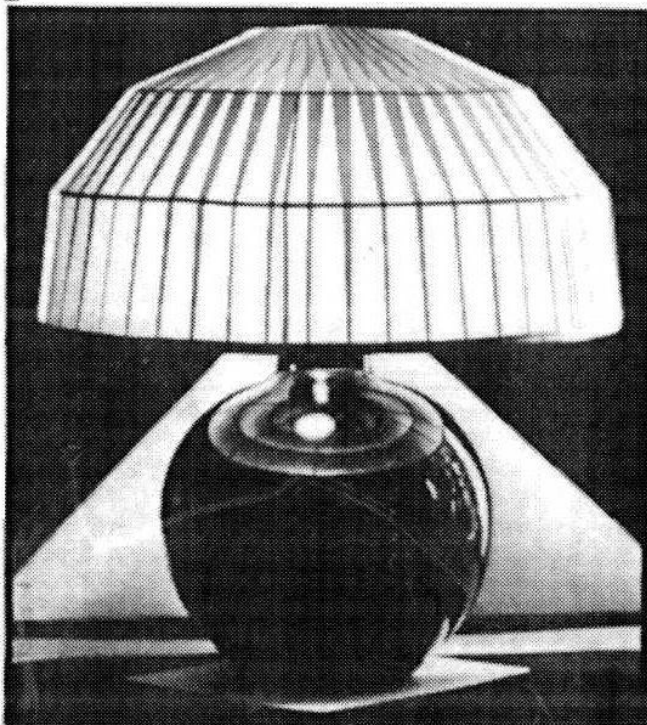


Figure 16 New Flower Bowls & Vases (back)

New Forms . . . New Uses for the Beauty of Glass



6504



6144

2



6914

3

Figure 17 New Forms (front)

No. 1—A crystal pheasant, No.
6504. 40 ⁰⁰ 50

No. 2—A black glass lamp with
shade of peach satin ribbon, No.
6144. — glass & shade complete 20 ⁰⁰ 50

No. 3—A modern design in
etched crystal, 11" high, No. 6914.



Paris. — 20 ⁰⁰ 50

Figure 18 New Forms (back)

Radiant Crystal . Brilliant Jet Coral . Green . and Amber

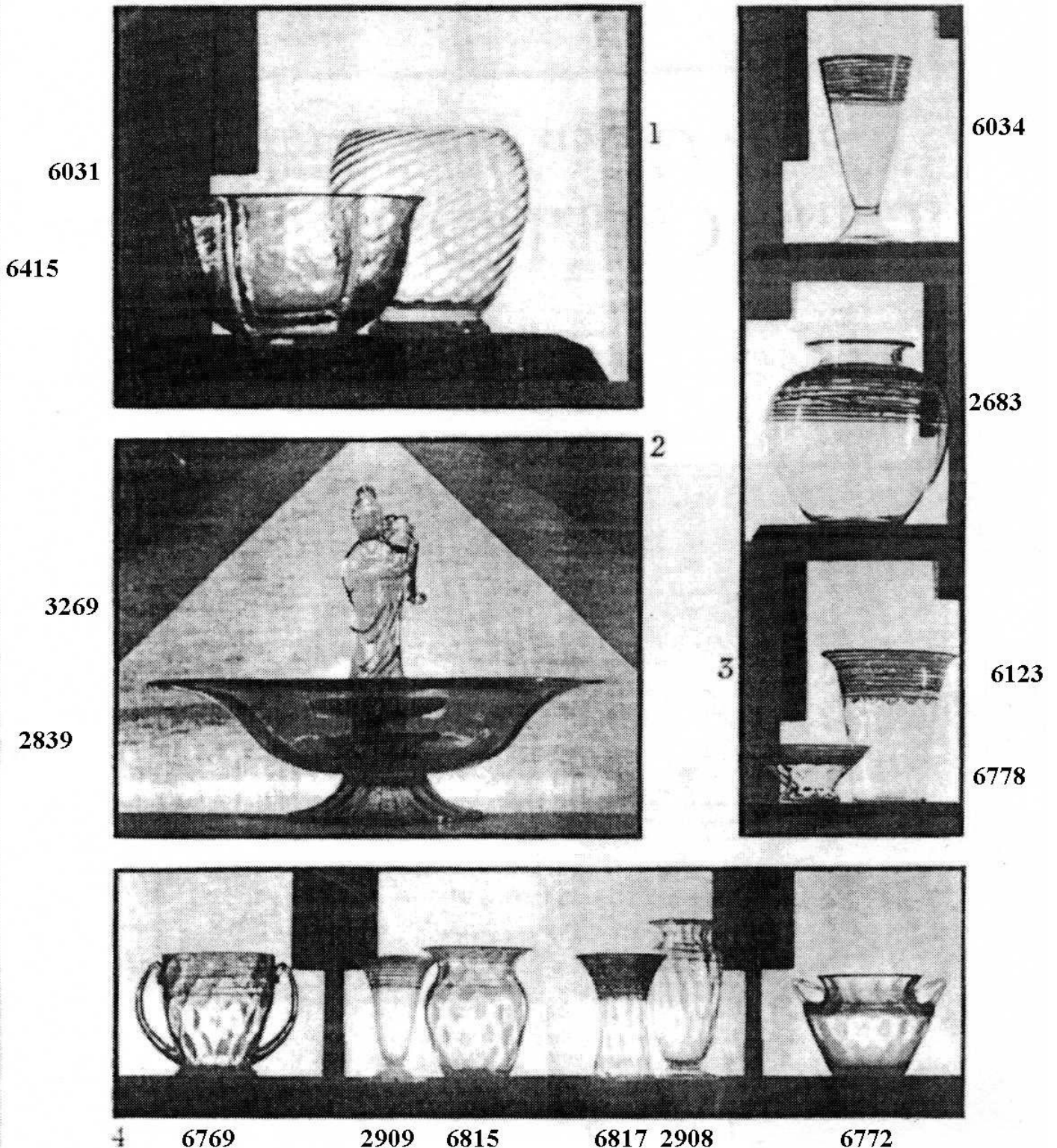


Figure 19 Radiant Crystal (front)

No. 1—An oval bowl in amber, French blue, Spanish, Pomona, or jade green, 5" high, No. 6415.

A round spiral bowl in crystal, Pomona green, French blue, and Bristol yellow, No. 6031.

No. 2—A suave grace distinguishes this low bowl of crystal, Pomona green, or Bristol yellow, 14" diameter, No. 2839.

The crystal Buddha on a black glass block is a perfect complement, No. 3269.

No. 3—From top to bottom:

A vase of crystal, reeded in black, rose, blue, or green, 12" tall, No. 6034.

A bowl of crystal, reeded in black, No. 2683.

A low bowl of crystal, reeded in black, rose, blue, or green, 8" in diameter, No. 6778.

A vase of crystal, reeded in black, rose, blue, or green, No. 6123.

No. 4—These six pieces all come in crystal reeded in black, rose, blue, or green, 6" to 8" high.

From left to right:

No. 6769.

No. 2909.

No. 6815.

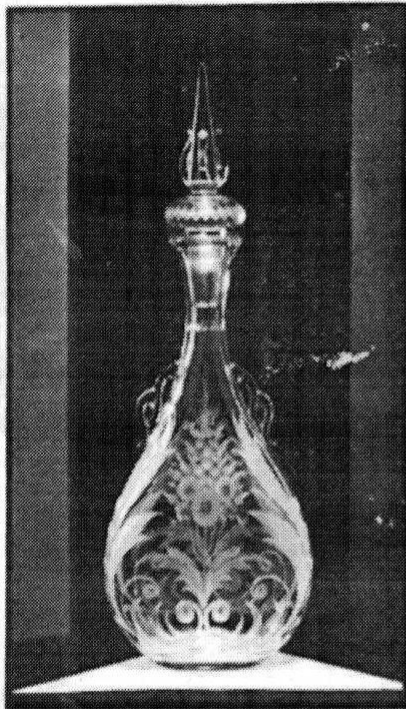
No. 6817.

No. 2908.

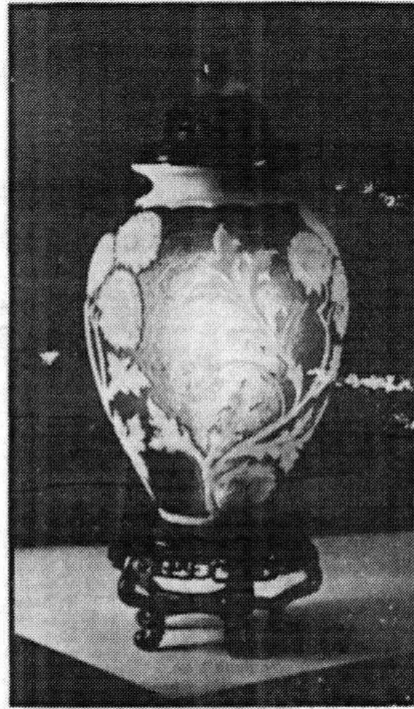
No. 6772.



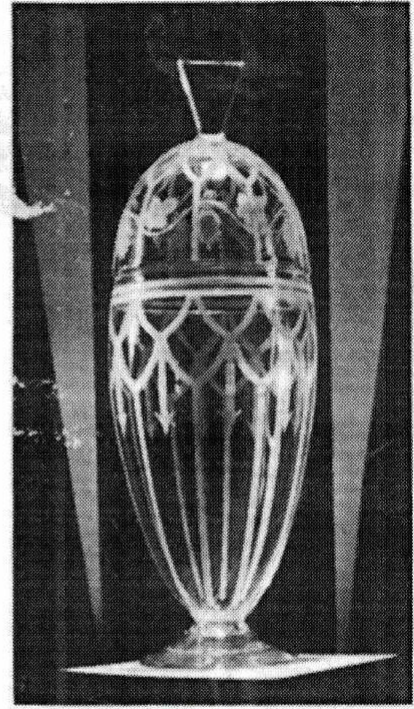
Figure 20 Radiant Crystal (back)



6612



8413 - Bristol



6897 - Dufrene

Rare Harmonies of Form, Design and Lovely Colorings

(see other side for descriptions)

Figure 21 Rare Harmonies (front)

From left to right:

A bottle of crystal or marina blue engraved
with lace-like delicacy, 15" high, No. 6612. 17.50

*Leakwood Cover 30¢
" bases 4 Ba
Fence. not prices.*

A jar of Oriental charm, etched in Bristol
design, in white over blue, No. 8413. 30.00 *glass only*

A smart modern jar of etched crystal, 17"
tall, No. 6897. *Design - 40.00*



Figure 22 Rare Harmonies (back)

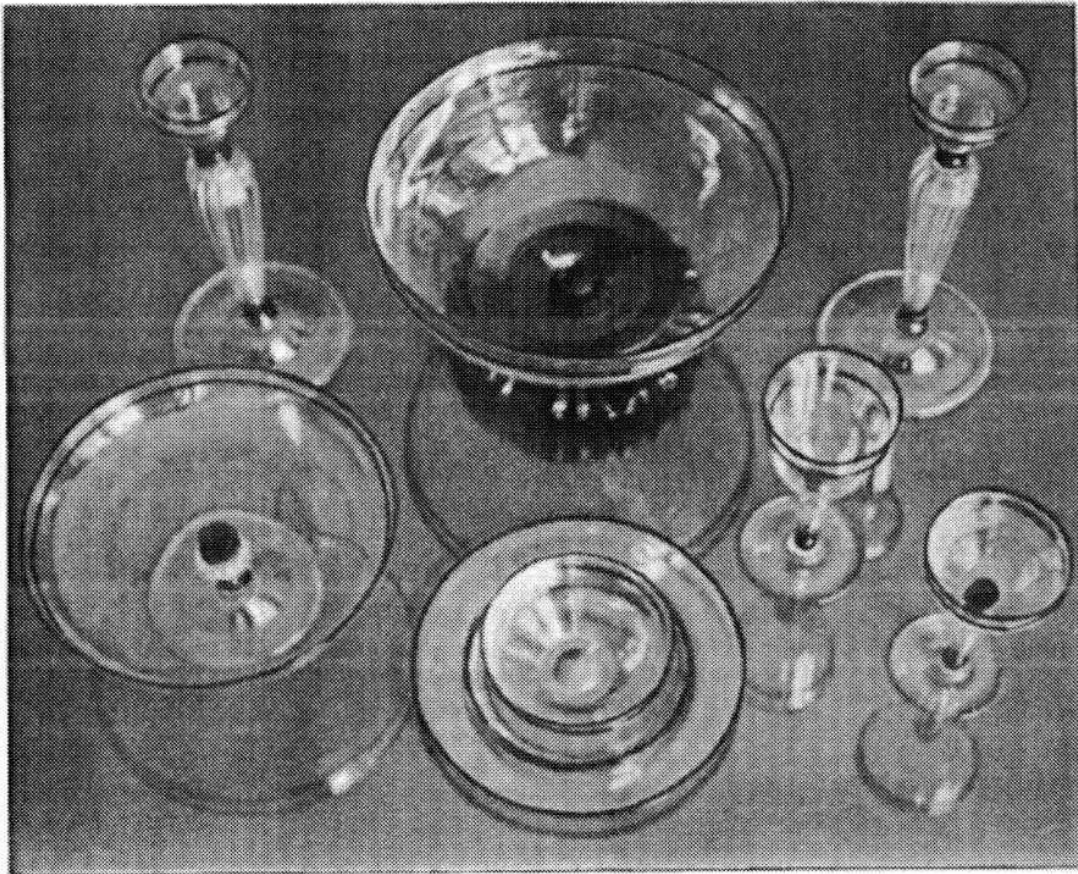
Shining Crystal accented with the Gleam of Jewels

6858

6858

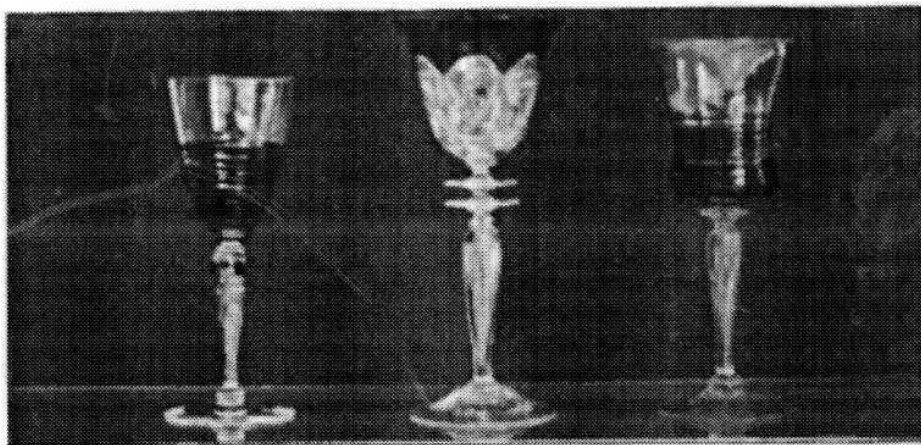
6858

6858



6574

1 6574



2

6603

6445

8381

Figure 23 Shining Crystal (front)

No. 1—A lovely dinner set of crystal, delicately outlined in ruby. *4.75 ea*
6⁰⁰ ea Center bowl, candlesticks, com-
6⁰⁰ ea pote, No. 6858.

2325 The graceful stemware of the set—Goblets, sherbets, dessert *8 1/2" Plate 16⁰⁰ ea*
 plates, No. 6574. *20⁰⁰ ea*.

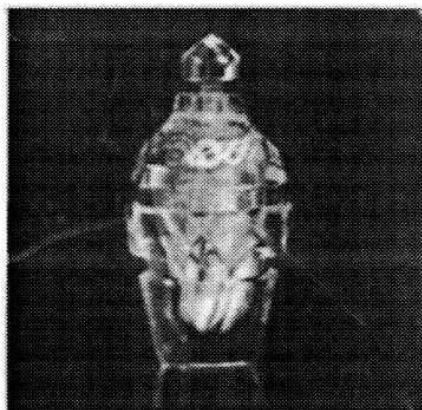
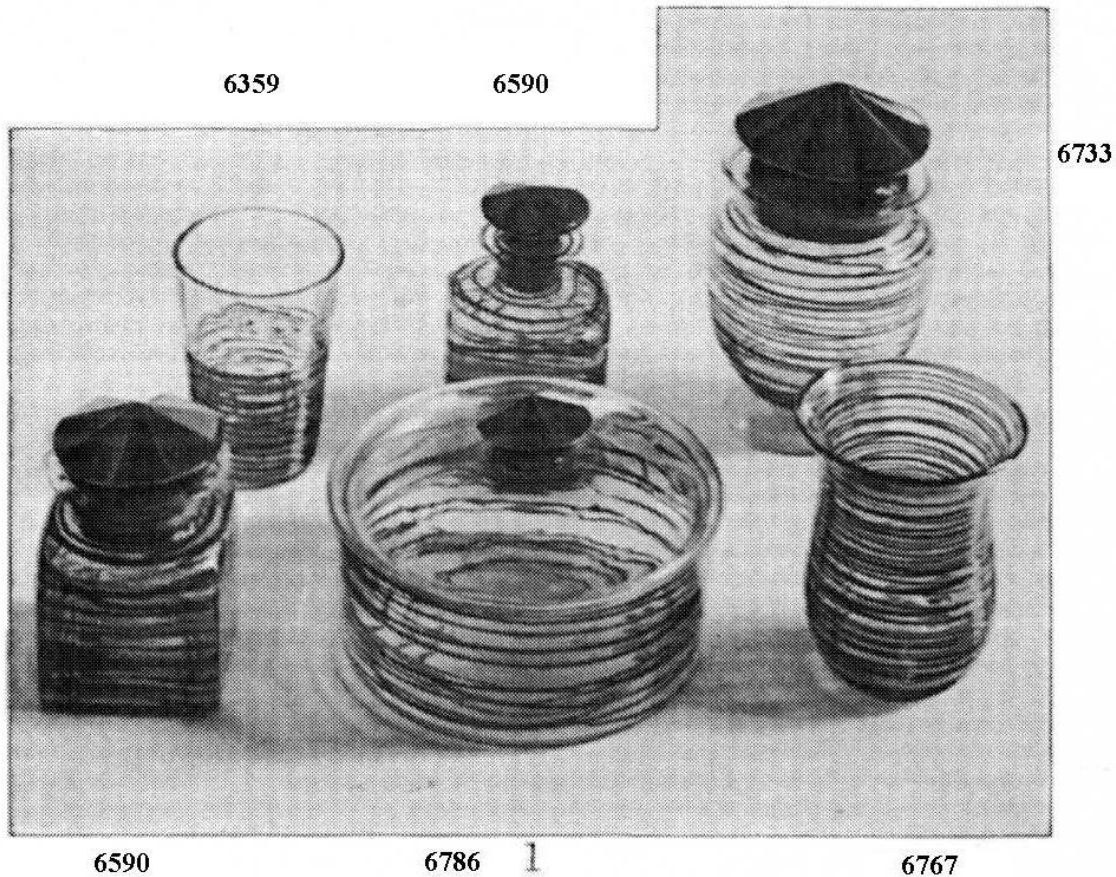
No. 2—A crystal goblet, reeded in black, No. 6603. *275⁰⁰ ea*
 A goblet, exquisitely engraved *Eng. 8 around 150⁰⁰*
 in the Fountain design, crystal and "6" *125⁰⁰ ea*
 Flemish blue, No. 6445.

A lovely goblet of Bristol yellow, reeded in black, No. 8381. *36⁰⁰ ea*.



Figure 24 Shining Crystal (back)

Smart Glass brings New Beauty to Modern Bathrooms



2
6708



3
6590

Figure 25 Smart Glass (front)

No. 1—A Bristol yellow bath-room set, reeded in black, with stoppers of black cut glass, is as decorative as it is useful.

Back row left to right:

Tumbler, No. 6359. *1 25 ea*

Small necked bottle, 5" high, No. 6590. *35 ea*

Bath salts jar, 6" high, No. 6733.

Front row left to right: *4 50 ea*

Wide necked bottle, 5" high, No. 6590. *4 50 ea*

Bath powder jar, No. 6786. *4 50 ea*

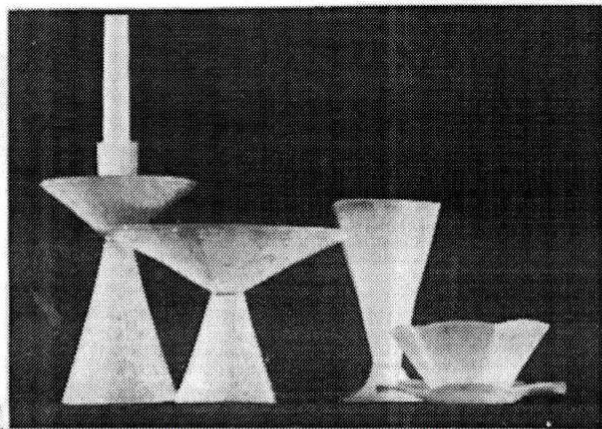
Tooth brush holder, No. 6767. *1 25 ea*

No. 2—A handsome bottle of deep cut crystal, with a center of sea-green agate and bubbled crystal, No. 6708. *50.00 ea*

No. 3—As subtly colored as an opal, a little lavender bottle with a flower stopper, No. 6590. *Small neck 3 ea*



Figure 26 Smart Glass (back)



1

6885

6909

Tableware in the Modern Spirit



2

6359

6830

6829

6834

(see other side for descriptions)

Figure 27 Tableware (front)

No. 1—Smart modern forms in white Cluthra, shading to blue, green, rose, or black.

Candlesticks, No. 6885. — 500 ea

Compote, No. 6885. — 500 ea

240 ea ← Goblets, Finger Bowls, and Plates, No. 6909. — 180 ea

No. 2—Interesting new bubbled and reeded glass—
from left to right:

Tumblers, No. 6359. — 195 ea

Pitcher, No. 6830. — 250 ea

Pitcher, No. 6829. — 250 ea

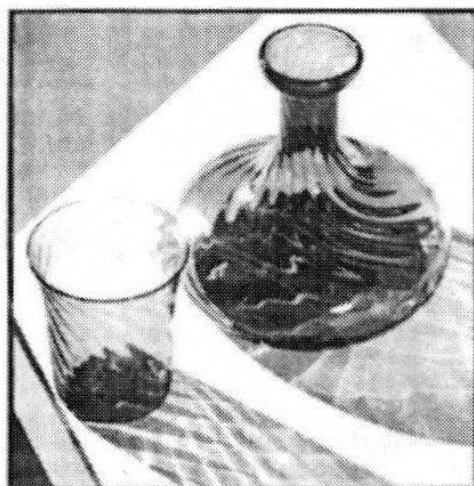
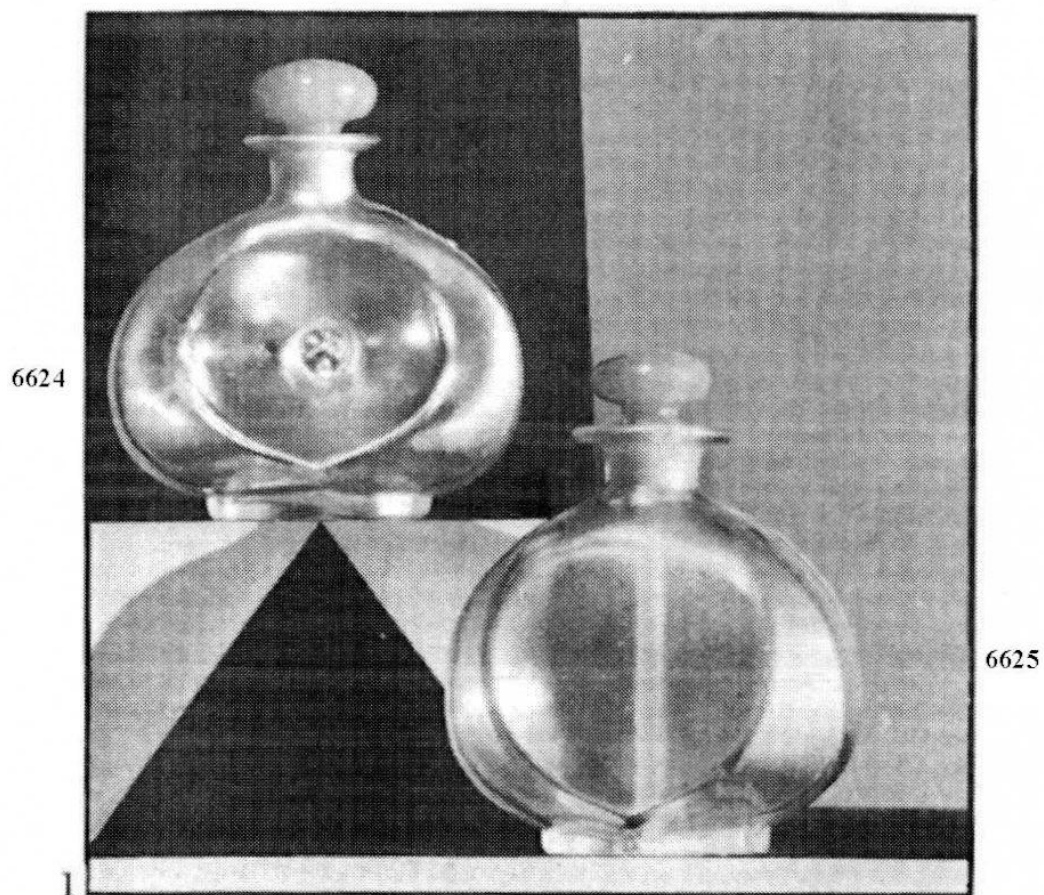
Pitcher, No. 6834. — 300 ea

Glasses and pitchers may be had in clear crystal reeded in rose, blue, green, yellow, or black, or in Bristol yellow, reeded in black.



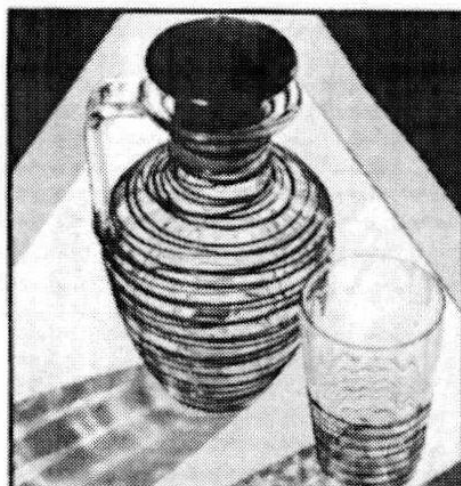
Figure 28 Tableware (back)

Tinted Glass of Rainbow Hues



2

6568



6889

6339

3

Figure 29 Tinted Glass (front)

No. 1—Upper bottle—A perfume bottle, in verre de soie with jade green stopper, 4½" high, No. 6624. *300 ea*

Lower bottle—A perfume bottle in verre de soie with jade green drip stopper, No. 6625. *400 ea*

No. 2—Night-table bottle and glass in spiral twist, 6" high, in (verre de soie, Bristol yellow *325 ea*, French blue, Pomona green, crystal and grenadine,) No. 6568. *475 ea*

No. 3—A lovely crystal pitcher reeded in black with a stopper of black cut glass, 9" tall, No. 6889. *500 ea*

Tumbler to match, No. 6359. - *125 ea*



Figure 30 tinted Glass (back)

Articles Made in the Fountain Decoration

Plates

Service
Dinner
Entree
Breakfast or Salad
Tea
Bread and Butter
Rim Soup
Coup Soup

Cups and Saucers

Tea
Coffee
After-Dinner
Bouillon
Cream Soups
Chocolate

Bowls

Salad
Mayonnaise
Berry
Flower

Vegetable Dishes

"Bakers"—Open
Covered—Oval
" —Round

Gravy Boat—Fast Stand
Sauce Tureen—" "

Cake Plates

Round and Square

Chop Dishes

Chop Dish, 12 in.
" " 14 "

Saucers

Cereal
Fruit

Platters

Platter, 10-in.
" 12 "
" 14 "
" 16 "
" 18 "
" 20 "

Miscellaneous

Baked Apple
Bon Bon
Butter Tub
Cheese and Cracker Dish
Cracker Jar
Egg Cup
Jam Jar
" " Tall
" " Plate
Luncheon Plate
" Cup
Chocolate Pot
Vase
Cocktail
Candlestick
Comports
Sandwich Tray, Large
" " Small
Salt and Pepper Shakers
Tea Pot Stand

Pitchers

2½ Pints
2 Pints
1 Pint
Hot M^{ilk}—Large
" " —Medium
" " —Small
Milk Pitcher



Godd.

THE
Fountain

for first

Figure 31 Fountain (front)

The "FOUNTAIN"

THE FOUNTAIN pattern, the newest Lenox creation, is an offspring of the free, wholesome, untrammelled spirit of modern art as revealed at the International Exposition of Decorative and Industrial Arts, held in Paris in the summer of 1925. It is new in all that the term implies—new in influence, new in treatment, new in significance and inspiration.

One critic has said that the great French exposition has given us "a spectacle of prophetic fantasy." The phrase is a graphic one, expressing the very essence of modern art. "For a long time," says the same observer, "we have enjoyed our age in terms of the past. But now comes a fresh joy in almost all the things that have hitherto been avoided."

In order to understand properly the things for which this beautiful, new Lenox design stands, the fact must be appreciated that the Exposition des Arts Decoratifs established a new style to take its place with those of the historic periods. It marked the coming of a new age of decoration, in that it set up entirely new standards, not the mere perfecting or adapting of the old. It created a definite break with the past.

Modern art ruled the exhibition. It was glorified and exalted. All forms of "period influence" were debarred. The virile, pulsating spirit of the Twentieth Century was abroad in Paris; not the ghosts of dead ages, seeking to lay their chilling hands upon youth and life and mold new thought, new design, new freedom into the familiar straitjackets of bygone periods.

Dominating this international event which has made history in the realm of art, were the creations of Edgar Brandt, foremost ironmaster of France. Wherever his work appeared the genius of an artist who has dared to break with the past was apparent. His wrought-iron creations were universally acknowledged to be among the outstanding artistic triumphs of the exposition. His fountain motif, in particular, was one of his crowning achievements. It is especially adaptable to ceramic design. Lenox, in its *Fountain* pattern, has caught the spirit of modern art and produced in delicate tracery and color a creation which is destined to establish new standards in American industrial art. In *The Fountain* there is complete freedom from any imitative influence of other periods. Lenox constantly seeks to interpret the modern decorative spirit, and ranks as one of the first American firms to express the ultra-modern note. The grace and daintiness of this fresh contribution to new ceramic standards will enchant those who are young with the Twentieth Century and believe that Today, the world of art as well as the world of science, invention and letters, is capable of laying aside the past and establishing its own styles and gauges of beauty. *The Fountain* pattern may well be said to be "prophetic fantasy" realized.

Figure 32 Fountain (back)

