

S T E U B E N
H A N D W R O U G H T
G L A S S

in the Tradition
sought by the Collector
and the Art Museum



Figure 1 Cover - Hand Wrought Glass

Flower Containers in Unusual Forms and Subtle Shadings



(see other side for descriptions)

Figure 2 Page 1 (front)

No. 1—An amethyst vase of classic grace, with teardrop trim, 15'' high, No. 6585.

A bowl like an open flower, in verre de soie, reeded in rose, green, or blue, No. 6592.

No. 2—An exquisite flower bowl of heavy cut crystal, blue moss-agate shading into pink, No. 6713.

No. 3—A little oval flower container of jade green glass, No. 6415.

No. 4—An interesting vase of Persian blue, reeded in yellow, 12'' tall, No. 6776.



Figure 3 Page 1 (back)

Smart Glass brings New Beauty to Modern Bathrooms

(see other side for descriptions)



6359
6590

6590 1
6786

6733

6767



2

6708



3

6590

Figure 4 Page 2 (front)

No. 1—A Bristol yellow bathroom set, reeded in black, with stoppers of black cut glass, is as decorative as it is useful.

Back row left to right:

Tumbler, No. 6359.

Small necked bottle, 5" high,
No. 6590.

Bath salts jar, 6" high, No. 6733.

Front row left to right:

Wide necked bottle, 5" high,
No. 6590.

Bath powder jar, No. 6786.

Tooth brush holder, No. 6767.

No. 2—A handsome bottle of deeply cut crystal, with a center of sea-green agate and bubbled crystal, No. 6708.

No. 3—As subtly colored as an opal, a little lavender bottle with a flower stopper, No. 6590.



Figure 5 Page 2 (back)

Radiant Crystal · Brilliant Jet Coral · Green · and Amber

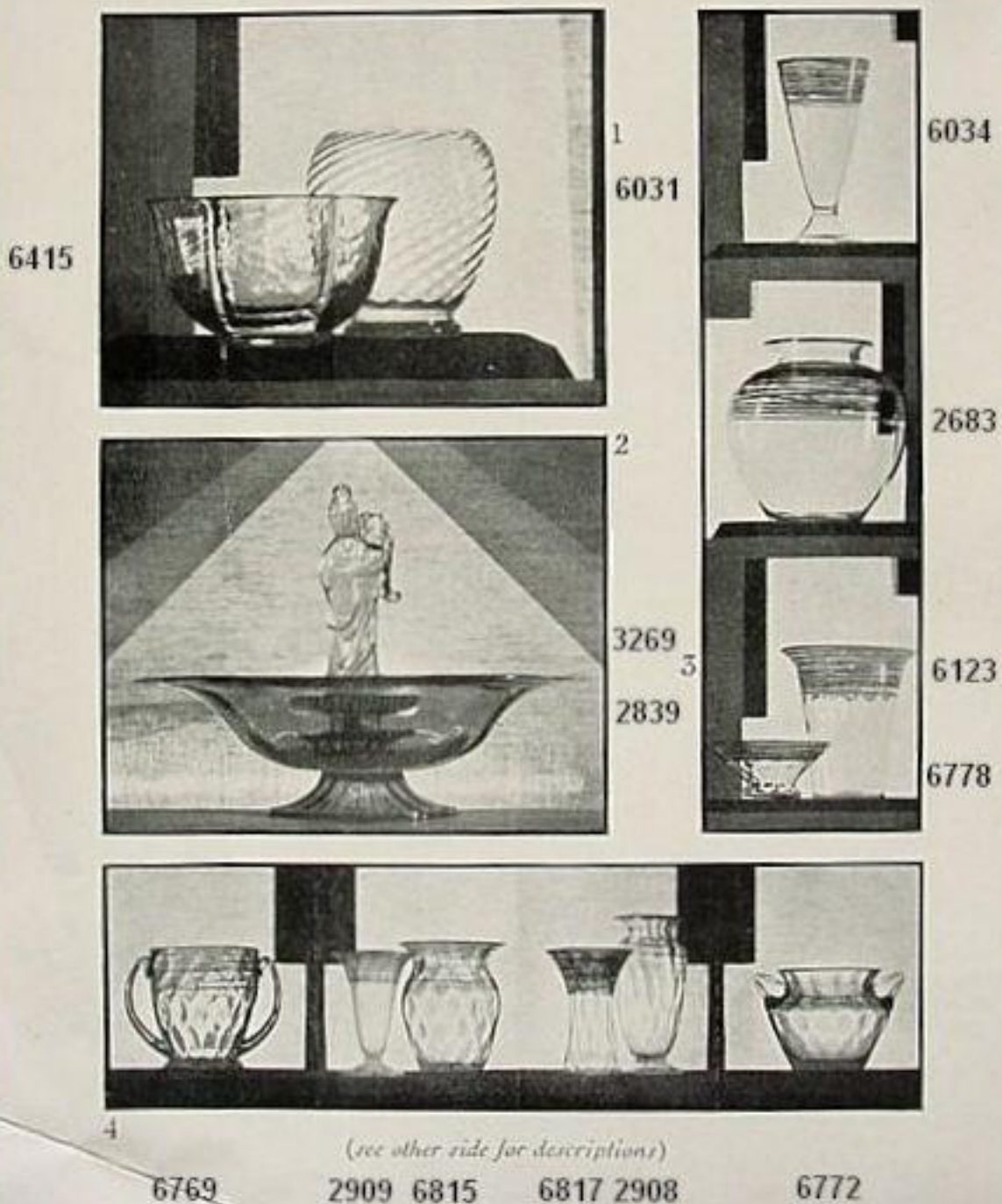


Figure 6 Page 3 (front)

No. 1—An oval bowl in amber, French blue, Spanish, Pomona, or jade green, 5" high, No. 6415.

A round spiral bowl in crystal, Pomona green, French blue, and Bristol yellow, No. 6031.

No. 2—A suave grace distinguishes this low bowl of crystal, Pomona green, or Bristol yellow, 14" diameter, No. 2839.

The crystal Buddha on a black glass block is a perfect complement, No. 3269.

No. 3—From top to bottom:

A vase of crystal, reeded in black, rose, blue, or green, 12" tall, No. 6034.

A bowl of crystal, reeded in black, No. 2683.

A low bowl of crystal, reeded in black, rose, blue, or green, 8" in diameter, No. 6778.

A vase of crystal, reeded in black, rose, blue, or green, No. 6123.

No. 4—These six pieces all come in crystal reeded in black, rose, blue, or green, 6" to 8" high.

From left to right:

No. 6769.

No. 2909.

No. 6815.

No. 6817.

No. 2908.

No. 6772.



Figure 7 Page 3 (back)

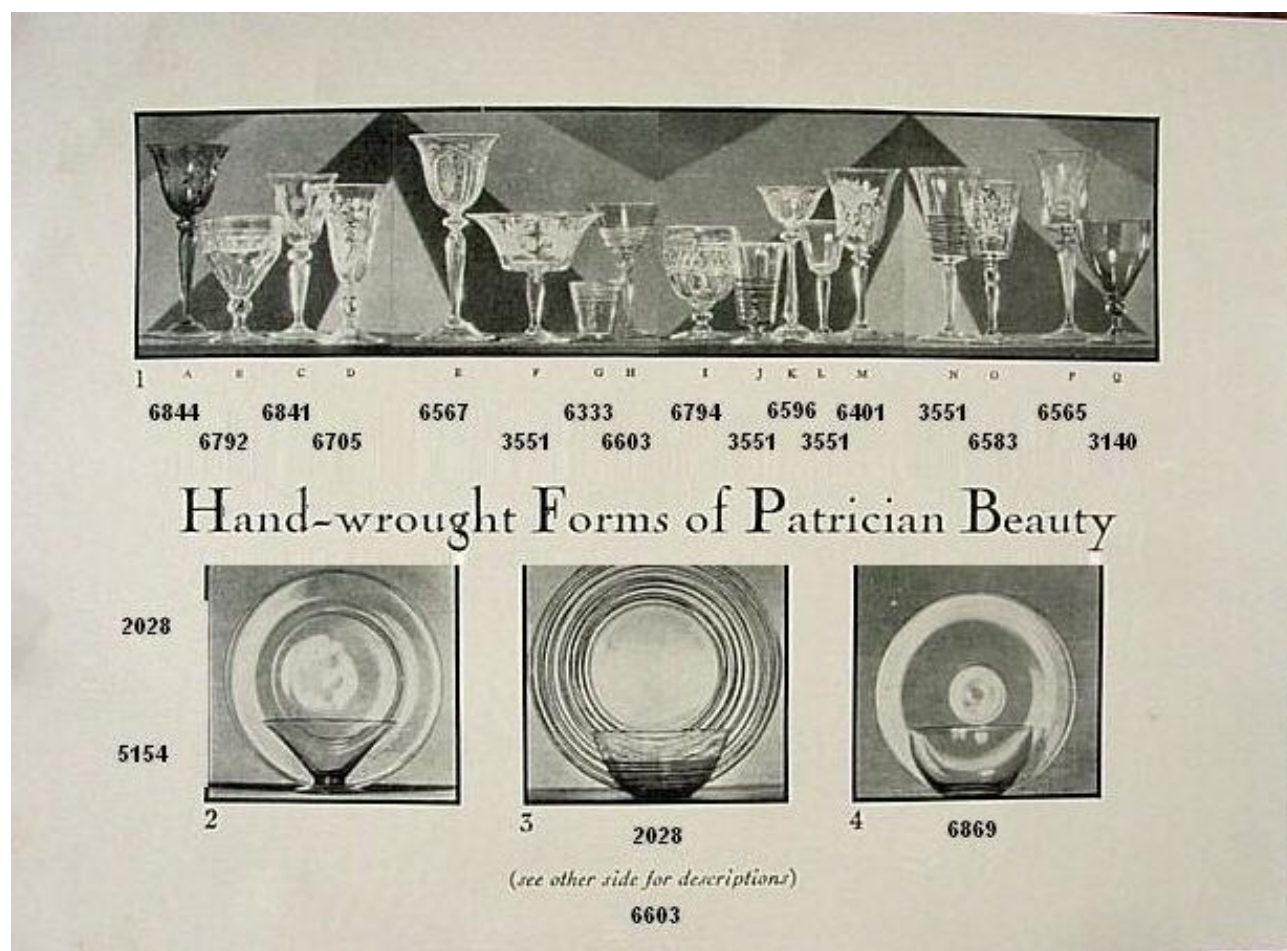


Figure 8 Page 4 (front)

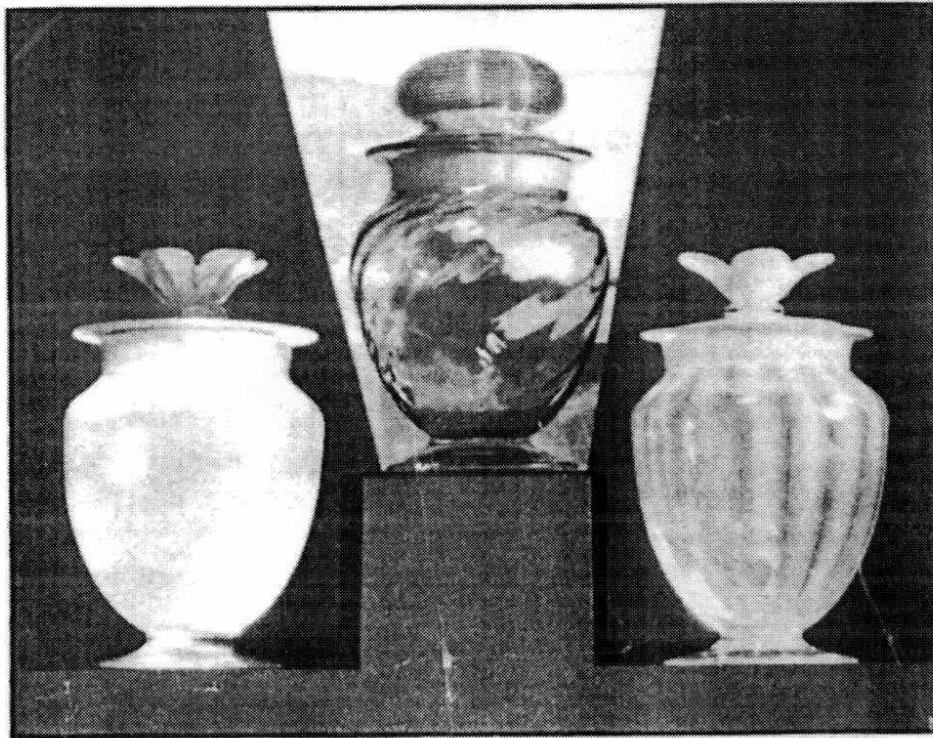
- No. 1—Reading from left to right:
- ^a—A lovely goblet of amethyst glass, engraved in the Spray design, No. 6844.
 - ^b—A handsome goblet of Bristol yellow glass, finely cut, No. 6792.
 - ^c—Beautifully chased and engraved in the St. Louis design is this goblet of crystal and amethyst, No. 6841.
 - ^d—A crystal goblet of slender grace, engraved in the Blue Tree design, No. 6705.
 - ^e—An exquisite goblet of engraved rock crystal, Melba design, No. 6567.
 - ^f—Graceful grapefruit glass with liner, in crystal with rosa or green stem, engraved in the Van Dyke design, No. 3551.
 - ^g—A colorful cocktail glass in Spanish green, reeded and bubbled, No. 6333.
 - ^h—A champagne glass of sparkling crystal, reeded in black, No. 6603.
 - ⁱ—A sturdy goblet of cut and polished Bristol yellow, No. 6794.
 - ^j—A footed, half-pint tumbler, Bristol yellow reeded in black, No. 3551.
 - ^k—A cocktail glass of lovely rock crystal, finely engraved, Midana design, No. 6596.
 - ^l—A cocktail glass with rosa or green stem and crystal cup, No. 3551.
 - ^m—An unusual goblet of Bristol yellow, engraved in Autumn design, No. 6401.
 - ⁿ—A striking goblet of Bristol yellow, reeded in black, No. 3551.
 - ^o—A goblet in Spanish green, delicately engraved in Mystic design, No. 6583.
 - ^p—A Marina Blue goblet, engraved in the Fountain design, No. 6565.
 - ^q—A goblet of glowing ruby, finely engraved, No. 3140.
- No. 2—A graceful amber finger bowl with plate to match. The bowl, No. 5154.
The plate, 8½", No. 2028.
- No. 3—A reeded finger bowl and plate of glass.
Bowl, No. 6603.
Plate, 8½", No. 2028.
- No. 4—A crystal finger bowl and plate to match, No. 6869.



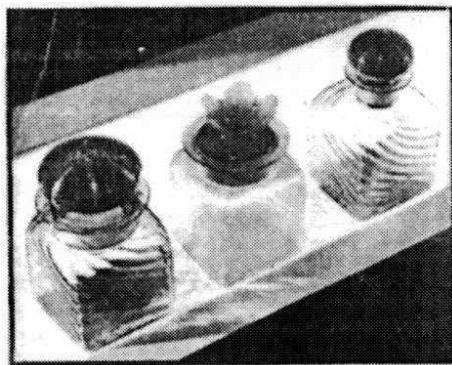
Figure 9 Page 4 (back)

Age-old Beauty in Glass of Modern Usefulness

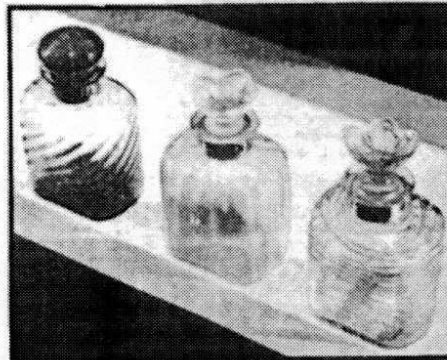
6733



6590



2



6887

3

(see other side for descriptions)

Figure 10 Page 5 (front)

No. 1—Bath salts jars that are also objets d'art—

From left to right:

Of verre de soie with a flower stopper of jade green or French blue, 6½" tall.

Of spiral glass in crystal, French blue, Bristol yellow, and Pomona green; in grenadine.

A jar of lovely clouded glass in poppy, jade, or orchid, No. 6733.

No. 2—Large necked bottle of spiral crystal, Pomona green, French blue, Bristol yellow.

In orchid or grenadine.

Large necked bottle of verre de soie with flower stopper in jade green or French blue.

Small necked bottle in Bristol yellow, Pomona green, French blue, or crystal.

In grenadine or orchid, No. 6590.

No. 3—Beautiful little bottles, suggesting many uses.

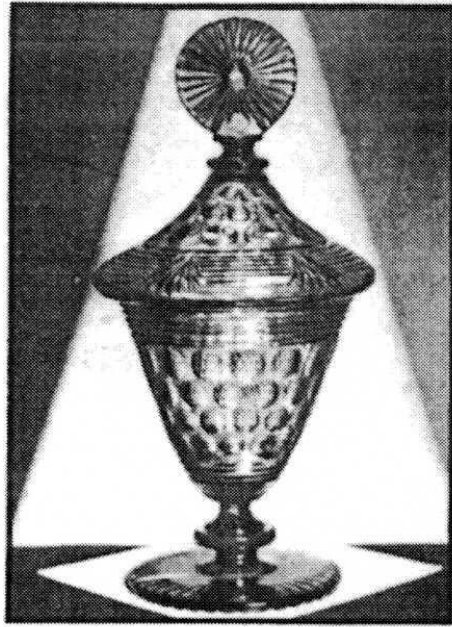
From left to right:

Small necked bottle in spiral twist, 5" tall, in crystal, French blue, Bristol yellow, and Pomona green; in grenadine or orchid.

Small necked bottle of opalescent glass with pink flower stopper.

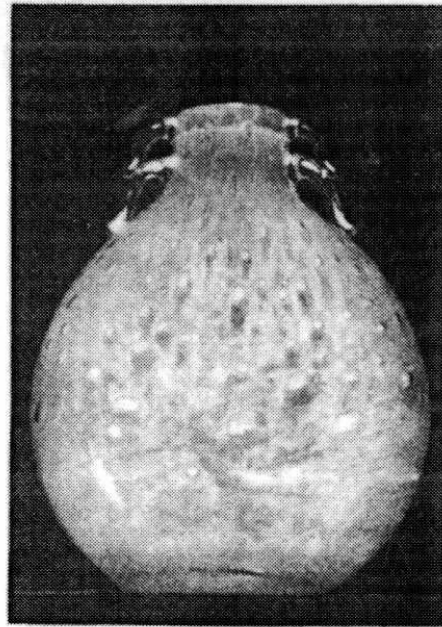
Small necked bottle in crystal, reeded in rose, No. 6887.





1

6636



6898

2

Ever Lovely Forms with the
Sparkle of Starlight



6857
Bristol

6649
Thistle

3
6857
Semper

6457
Rostrand

6457
Cameo

Figure 12 Page 6 (front)

No. 1—A handsome jar in crystal or amethyst with the charm of the unusual, 16" high, No. 6636.

No. 2—Of beautiful Cluthra glass in rose, blue, green, or black—a jar of Greek design, No. 6898.

No. 3—From left to right:
Crystal, etched in Bristol design, 20" high, No. 6857.

Of rose quartz, sculptured in Thistle design, No. 6649.

Of rose glass etched in Semper design, No. 6857.

Rose Quartz, finely sculptured, 15" high, in Rostrand design, No. 6457.

Of rose cameo, beautifully etched, 16" high, in Cameo design, No. 6457.



Figure 13 Page 6 (back)