

Steuben Glass Works at NOMA

74.155

Steuben Glass Works, Inc.; Carder, Frederick, USA

Aurene Vase, n.d.

Blue free blown, applied and iridized glass, 6 x 5 1/2 in.

Museum purchase, Zemurray Foundation Funds



78.195

Steuben Glass Works, Inc.; Waugh, Sidney; Libisch, Joseph, USA

Pegasus Vase, circa 1935

Blown and engraved glass, 7 1/4 x 4 in.

Gift of Mrs. Eugene Davidson



82.136

Steuben Glass Works, Inc.; Carder, Frederick, USA: New York, Corning

Grotesque Vase, circa 1950

Glass,

Gift of Mrs. P. Roussel Norman



85.2

Steuben Glass Works, Inc.; USA: New York, Corning

Tazza or Compote, circa 1930

Transparent topaz glass, free blown, tooled and applied,

1985 Decorative Arts Discretionary Purchase Fund



86.80

Steuben Glass Works, Inc.; Carder, Frederick, USA: New York, Corning

Vase, circa 1920

Glass,

Gift of Elise Newman Solomon



86.470.a.,b

Steuben Glass Works, Inc.; Waugh, Sidney, USA: New York, Corning

Inkwell, 1938

Colorless lead glass: free-blown, applied and tooled, 5 1/2 x 3 5/8 (max diam.) in.

1985 Decorative Arts Discretionary Purchase Fund



Steuben Glass Works at NOMA

88.347

Steuben Glass Works, Inc., USA
Bowl, circa 1960-1961
Leadglass, blown and tooled,

Gift of Mary Bloom



89.278.a,b

Steuben Glass Works, Inc.; Carder, Frederick, USA
Center (or console) Bowl and Frog, circa 1920
Transparent pale amethyst lead glass: expanded mold-blown, applied and tooled.,
bowl: at lip: 6 7/8 x 12 1/4 in., at foot: 6 7/8 x 7 1/8 in., frog: 6 7/8 x 3 7/8 in.
Museum purchase, 1989 Decorative Arts Discretionary Purchase Fund



91.586.a,b

Steuben Glass Works, Inc.; Groult, Andre, USA
Toilette Jar and Stopper, circa 1925-1930
Blown colorless lead glass, 5 x 2 3/4 in.

Gift of Mrs. Shepard H. Shushan



92.802.1

Steuben Glass Works, Inc., USA: New York, Corning
Compote, Part of Compote and Pair of Candlesticks, circa 1909
Transparent lead glass, 14 15/16 x 7 1/8 in.

Gift of Bee Pollock in memory of her parents, Charles and Sigrid Pollock



92.802.2

Steuben Glass Works, Inc., USA: New York, Corning
Candlestick, Part of Compote and Pair of Candlesticks, circa 1909
Transparent lead glass, 10 x 2 3/4 in.

Gift of Bee Pollock in memory of her parents, Charles and Sigrid Pollock



92.802.3

Steuben Glass Works, Inc., USA: New York, Corning
Candlestick, Part of Compote and Pair of Candlesticks, circa 1909
Transparent lead glass, 10 x 2 3/4 in.

Gift of Bee Pollock in memory of her parents, Charles and Sigrid Pollock



Steuben Glass Works at NOMA

93.125

Steuben Glass Works, Inc., USA: New York, Corning
Tea Plate, circa 1910-1920
Transparent cobalt blue lead glass: blown and tooled, 6 7/8 in.

Gift of John Webster Keefe in memory of his cousin, Mary Shoemaker Wilhelmi



93.160

Steuben Glass Works, Inc.; Carder, Frederick, USA: New York, Corning
Cluthra Vase, late 1920s
Lead glass, 10 1/4 in.

New Orleans Museum of Art: Museum purchase in honor of E. John Bullard's 20th Anniversary as Director by the Board of Trustees



93.161

Steuben Glass Works, Inc.; Carder, Frederick, USA: New York, Corning
Silverina Vase, late 1920s
Lead glass, 9 5/8 in.

New Orleans Museum of Art: Museum purchase in honor of E. John Bullard's 20th Anniversary as Director by the Board of Trustees



93.162

Steuben Glass Works, Inc.; Carder, Frederick, USA: New York, Corning
Verre de Soie Perfume Bottle with Dark Jade Blue Stopper, 1905-1932
Lead glass, 6 3/4 in.

New Orleans Museum of Art: Museum purchase in honor of E. John Bullard's 20th Anniversary as Director by the Board of Trustees



93.163

Steuben Glass Works, Inc.; Carder, Frederick, USA: New York, Corning
Vase, circa 1930
Lead glass, 9 1/8 in.

New Orleans Museum of Art: Museum purchase in honor of E. John Bullard's 20th Anniversary as Director by the Board of Trustees



93.164

Steuben Glass Works, Inc.; Carder, Frederick, USA: New York, Corning
Oriental Poppy Wineglass, circa 1920s
Lead glass, 7 1/4 in.

New Orleans Museum of Art: Museum purchase in honor of E. John Bullard's 20th Anniversary as Director by the Board of Trustees



Steuben Glass Works at NOMA

93.165

Steuben Glass Works, Inc.; Carder, Frederick, USA: New York, Corning
Goblet in the Poussin Pattern, late 1920s
Lead glass, 9 1/2 in.

New Orleans Museum of Art: Museum purchase in honor of E. John Bullard's 20th Anniversary as Director by the Board of Trustees



94.69.a,.b

Steuben Glass Works, Inc.; Carder, Frederick, USA: New York, Corning
Cologne Bottle and Stopper: Cintra, circa 1925
Lead glass over black and white lead glass, 9 in.

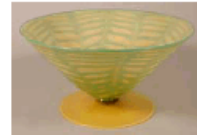
New Orleans Museum of Art: Museum Purchase, George S. Frierson, Jr. Fund



94.248

Steuben Glass Works, Inc., USA: New York, Corning
Footed Bowl, circa 1905-1908
Translucent amber and transparent green lead glass, 4 7/8 x 9 5/8 in.

Gift of Dr. W. Morell and Alice Miller



95.4

Steuben Glass Works, Inc.; Waugh, Sidney, USA: New York, Corning
Angel Fish, circa 1935
Colorless leaded glass, 10 1/2 in.

New Orleans Museum of Art: Museum purchase, A. Baker and Sally Duncan Fund



95.141.1

Steuben Glass Works, Inc., USA
Swimming Swan, Head Up (One of Pair), circa 1985
Colorless lead glass: gathered and tooled, 4 3/4 x 6 3/4 x 2 3/4 in.

Bequest of Eva Carol Boles (The William McDonald Boles and Eva Carol Boles Collection)



95.141.2

Steuben Glass Works, Inc., USA
Swimming Swan, Head down (One of Pair), circa 1985
Colorless lead glass: gathered and tooled, 3 x 7 1/4 in.

Bequest of Eva Carol Boles (The William McDonald Boles and Eva Carol Boles Collection)



Steuben Glass Works at NOMA

95.142

Steuben Glass Works, Inc., USA: New York, Corning

Bowl, n.d.

Glass, 5 1/4 x 10 in.

Bequest of Eva Carol Boles (The William McDonald Boles and Eva Carol Boles Collection)



95.143

Steuben Glass Works, Inc., USA: New York, Corning

Bowl, n.d.

Glass, 3 3/4 x 13 in.

Bequest of Eva Carol Boles (The William McDonald Boles and Eva Carol Boles Collection)



95.174

Steuben Glass Works, Inc.; Atkins, Lloyd, USA: New York, Corning

Martini Pitcher, 1955

Glass, 10 1/4 x 3 1/2 x 5 1/2 in.

Bequest of Eva Carol Boles (The William McDonald Boles and Eva Carol Boles Collection)



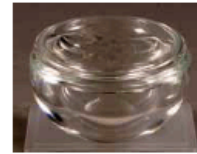
95.176.1.a.,b

Steuben Glass Works, Inc., USA

Covered Bowl with Cherub Figure, n.d.

Etched glass, 2 x 3 in.

Bequest of Eva Carol Boles (The William McDonald Boles and Eva Carol Boles Collection)



95.176.2.a,b

Steuben Glass Works, Inc.; Thompson, George; Battersby J., USA

Perfume Bottle and Stopper with Cherub Figure, circa 1942-1944

Engraved glass, 4 x 2 1/4 in.

Bequest of Eva Carol Boles (The William McDonald Boles and Eva Carol Boles Collection)



95.177.a.,b

Steuben Glass Works, Inc.; Thompson, George, USA

Whiskey Decanter with Air-Trap Stopper, 1948 (designed)

Colorless lead glass: freeblown, tooled, and cut, 10 1/2 x 4 in.

Bequest of Eva Carol Boles (The William McDonald Boles and Eva Carol Boles Collection)



Steuben Glass Works at NOMA

95.180.a.,b

Steuben Glass Works, Inc., USA

Footed Bowl, n.d.

Glass, 7 1/4 x 6 1/2 x 12 3/4 in.

Bequest of Eva Carol Boles (The William McDonald Boles and Eva Carol Boles Collection)



95.225

Steuben Glass Works, Inc.; Pollard, Donald, USA: New York, Coming

Seated Cat, circa 1950

Colorless lead glass: gathered, tooled, polished and engraved, Height, width (side to side), diam. (front to back): 8 3/4 x 2 3/4 x 2 3/4 in.;

Gift of Mrs. John N. Weinstock



96.61.1-.5

Steuben Glass Works, Inc.; Thompson, George, USA

Martini Set (Pitcher and Four Glasses), 1959

Transparent, colorless lead glass: blown and applied, Pitcher: h: 8 5/8 in.;

glasses:

h: 3 7/8 in.

Gift of Mrs. Richard Fowler



96.178

Steuben Glass Works, Inc., USA

"Horned Grebe" Audubon Plate, circa 1940

Crystal glass, 10 in.

1985 Decorative Arts Discretionary Purchase Fund



97.621

Steuben Glass Works, Inc.; Carder, Frederick, USA: New York, Coming

Two-Handled Balustre Vase "Jade", circa 1925

Translucent jade green and opalescent lead glass: freeblown, tooled and applied, 10 1/4 in.

New Orleans Museum of Art: Museum Purchase, The Leah Norman Schreier Memorial Collection



97.627a,b

Steuben Glass Works, Inc.; Kroll, Leon, USA

Covered Vase, from "27 Contemporary Artists", 1940

Transparent, colorless lead glass: blown, tooled, applied and engraved, 17 3/4 in.

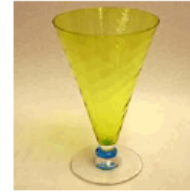
New Orleans Museum of Art: Museum Purchase, William McDonald Boles and Eva Carol Boles Fund



Steuben Glass Works at NOMA

99.81

Steuben Glass Works, Inc.; Carder, Frederick, USA: New York, Corning
Ale Glass: "Spiral Optic Rib", circa 1920-1925
Transparent citron yellow, blue and colourless lead glass: expanded mold-blown, applied and tooled, 6 3/8 x 3 7/8 (diam. at lip) x 3 1/16 (diam. of foot) in.
Gift of Dr. David C. Schwab



2003.249.112

Steuben Glass Works, Inc.; Carder, Frederick, USA: New York, Corning
Atomiser scent bottle, circa 1917
Blown, tooled lead glass, gilt metal, 7 3/8 x 2 1/4 in.

Gift of Karen Harriman Harris in memory of her husband, Louis Solomon Harris (1918-2003)



2003.249.113

Steuben Glass Works, Inc.; Carder, Frederick, USA: New York, Corning
Aurene triple or stump vase, n.d.
Iridescent glass, 6 3/8 x 4 in.

Gift of Karen Harriman Harris in memory of her husband, Louis Solomon Harris (1918-2003)



2003.249.114

Steuben Glass Works, Inc., USA: New York, Corning
Vase, circa 1890
Molded glass, 9 1/4 x 5 5/8 x 3 1/8 in.

Gift of Karen Harriman Harris in memory of her husband, Louis Solomon Harris (1918-2003)



2003.249.115

Steuben Glass Works, Inc.; Carder, Frederick, USA: New York, Corning
Aurene bowl, circa 1900
Blown, cased iridescent glass, 3 3/4 x 4 3/4 in.

Gift of Karen Harriman Harris in memory of her husband, Louis Solomon Harris (1918-2003)



2003.249.116

Steuben Glass Works, Inc.; Carder, Frederick, USA: New York, Corning
Aurene lamp shade, circa 1900
Cased iridescent glass, 4 3/4 x 4 1/4 in.

Gift of Karen Harriman Harris in memory of her husband, Louis Solomon Harris (1918-2003)



Steuben Glass Works at NOMA

2003.249.117.a,.b

Steuben Glass Works, Inc., USA: New York, Corning
Sherbet cup and underplate "Venetian", circa 1910
Glass, Cup: 5 x 4 1/8 in.; underplate: 3/4 x 5 1/2 in.

Gift of Karen Harriman Harris in memory of her husband, Louis Solomon Harris (1918-2003)



2003.249.118

Steuben Glass Works, Inc., USA: New York, Corning
Vase: Dahlias, circa 1920-1925
Colorless lead glass: free-blown and acid-cutback, 10 x 6 in.

Gift of Karen Harriman Harris in memory of her husband, Louis Solomon Harris (1918-2003)



2003.249.119

Steuben Glass Works, Inc.; Carder, Frederick, USA: New York, Corning
Vase, 1903-1918
Iridescent, etched, cut glass, "Verre de Soie" pattern, 7 7/8 x 4 3/8 in.

Gift of Karen Harriman Harris in memory of her husband, Louis Solomon Harris (1918-2003)



2003.249.120

Steuben Glass Works, Inc.; Carder, Frederick, USA: New York, Corning
Aurene vase, circa 1910
Blown iridescent glass, 5 1/2 x 5 5/8 in.

Gift of Karen Harriman Harris in memory of her husband, Louis Solomon Harris (1918-2003)



2003.249.121

Steuben Glass Works, Inc.; Carder, Frederick, USA: New York, Corning
Amber bowl, 1910-1920
Glass, 5 x 9 in.

Gift of Karen Harriman Harris in memory of her husband, Louis Solomon Harris (1918-2003)



2003.249.122

Steuben Glass Works, Inc.; Carder, Frederick, USA: New York, Corning
Iridescent red plate, circa 1910
Glass, 1 1/4 x 7 7/8 in.

Gift of Karen Harriman Harris in memory of her husband, Louis Solomon Harris (1918-2003)



Steuben Glass Works at NOMA

2003.249.123

Steuben Glass Works, Inc.; Carder, Frederick, USA: New York, Coming
Plate, circa 1910
Glass, 5/8 x 8 1/2 in.



Gift of Karen Harriman Harris in memory of her husband, Louis Solomon Harris (1918-2003)

2003.249.124

Steuben Glass Works, Inc.; Carder, Frederick, USA: New York, Coming
Frosted, translucent vase, circa 1915
Glass, 9 x 7 in.



Gift of Karen Harriman Harris in memory of her husband, Louis Solomon Harris (1918-2003)

2003.249.125

Steuben Glass Works, Inc.; Carder, Frederick, USA: New York, Coming
Aurene vase, circa 1915
Blown iridescent glass, 12 x 6 3/8 in.



Gift of Karen Harriman Harris in memory of her husband, Louis Solomon Harris (1918-2003)

2003.249.126

Steuben Glass Works, Inc.; Carder, Frederick, USA: New York, Coming
Vase, circa 1915
Acid cut back glass, 11 3/4 x 6 1/8 in.



Gift of Karen Harriman Harris in memory of her husband, Louis Solomon Harris (1918-2003)

2003.249.127.a.,b

Steuben Glass Works, Inc.; Carder, Frederick, USA: New York, Coming
Sherbet cup and underplate, 1910-1920
Calcite finished glass, Sherbert: 3 7/8 x 3 7/8 in; underplate: 1 1/8 x 6 in.



Gift of Karen Harriman Harris in memory of her husband, Louis Solomon Harris (1918-2003)

2003.249.128.a.,b

Steuben Glass Works, Inc.; Carder, Frederick, USA: New York, Coming
Wine Glass and underplate, circa 1915-1920
Transparent green and rose lead glass: expanded mold-blown, applied and tooled,
Goblet: 4 3/4 x 3 1/2 in.; underplate: 7/8 x 8 3/8 in.
Gift of Karen Harriman Harris in memory of her husband, Louis Solomon Harris (1918-2003)



Steuben Glass Works at NOMA

2003.249.129

Steuben Glass Works, Inc.; Carder, Frederick, USA: New York, Corning
Brandy Glass: "Venetian", circa 1920-1925
Colorless and transparent rose lead glass: expanded mold-blown and threaded, 2 5/8 x 2 3/8 in.
Gift of Karen Harriman Harris in memory of her husband, Louis Solomon Harris (1918-2003)



2004.39.a-b

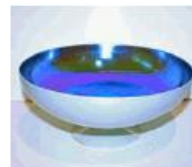
Steuben Glass Works, Inc., USA: New York, Corning
Gazelle Bowl, 1935
Colorless, transparent lead optic glass: blown, carved, and copper-wheel engraved., 6 7/8 x 6 1/2 in.
Museum Purchase, William McDonald Boles and Eva Carol Boles Fund



2004.141

Steuben Glass Works, Inc., USA: New York, Corning
Blue Aurene Calcite Pedestal Bowl, circa 1922
Leaded glass: blown, cased, applied and iridized, 4 1/2 x 10 in.

Gift of Victoria Alexander Gadiant



2004.220

Steuben Glass Works, Inc.; Dreves, John, USA: New York, Corning
Olive Dish, 1939
Colorless lead glass: freeblown, applied and tooled, 3 x 5 in.

Gift of John J. Sullivan



2005.28

Steuben Glass Works, Inc.; Thompson, George, USA: New York, Corning
Bowl with Hollow Base, 1957
Colorless lead glass: blown, applied and tooled, 6 3/4 x 10 7/8 in.

Gift in memory of Alice Gross Newhouse



2006.11a,b

Steuben Glass Works, Inc., USA: New York, Corning
Covered Footed Bowl: Louisiana, 1959
Colorless leadglass: blown, tooled and engraved, 15 in. h. x 7 3/4 in.

Gift of Dr. and Mrs. Isidore Cohn, Jr. in honor of John Keeffe



Steuben Glass Works at NOMA

2009.2.101

Steuben Glass Works, Inc.; Carder, Frederick, USA

Vase: *Cluthra*, circa 1925-1930

Blown cluthra glass; white translucent and transparent glass, 10 1/4 x 5 1/4 (diam. at mouth) in.

Gift of Jack M. Sawyer



2009.2.112

Steuben Glass Works, Inc.; Carder, Frederick, USA

Wine Goblet: *Oriental Poppy*, circa 1925-1930

Nonleaded blown, tooled, and applied in opaque white, clear, and aqua colored glass, 7 1/4 x 4 (diam. at mouth) in.

Gift of Jack M. Sawyer



2009.2.113

Steuben Glass Works, Inc.; Carder, Frederick, USA

Bowl: *Grotesque*, circa 1925-1930

Lead glass blown and tooled in pale green at base to dark green at lip, 6 x 8 1/2 in.

Gift of Jack M. Sawyer



2009.2.123

Steuben Glass Works, Inc.; Hills, David, USA

Vase: *Signet*, 1950

Nonleaded glass; clear; pinched with prunts, 6 1/4 x 4 (diam. at mouth) in.

Gift of Jack M. Sawyer



2009.2.133

Steuben Glass Works, Inc.; Carder, Frederick, USA

Bud Vase: *Triple Thorn*, circa 1910-1915

Mold and free blown; blue; iridized, 6 1/4 x 4 (diam. at base) in.

Gift of Jack M. Sawyer



2009.2.134

Steuben Glass Works, Inc.; Carder, Frederick, USA

Shallow Bowl: *Calcite*, circa 1915-1920

Blown nonleaded calcite glass in flat bowl form, 2x 10 in.

Gift of Jack M. Sawyer



Steuben Glass Works at NOMA

2009.2.135

Steuben Glass Works, Inc.; Carder, Frederick, USA

Console Bowl: Calcite, circa 1925-1930

Free blown; cased, tooled, and iridized glass; amber and opaque white lead glass; calcite type, 3x 12 (diam. at lip) in.

Gift of Jack M. Sawyer



2009.2.137

Steuben Glass Works, Inc.; Carder, Frederick, USA

Flared Vase, circa 1920-1930

Leaded ivory glass; blown, tooled, and iridized, 9 x 10 1/2 in.

Gift of Jack M. Sawyer



2009.2.138a,b

Steuben Glass Works, Inc.; Carder, Frederick, USA

Toilette Jar: Threaded, circa 1920-1925

Nonleaded amber glass with impressed threading and black glass stopper, 5 x 2 3/4 in.

Gift of Jack M. Sawyer



2009.2.139.1,.2

Steuben Glass Works, Inc.; Carder, Frederick, USA

Pair of Candlesticks: Venetian, circa 1920

Nonleaded amethyst glass; blown, tooled, and applied in venetian style, 1: 14 x 6 1/2 (diam. at base) in.; 2: 14 x 6 1/2 (diam. at base) in.

Gift of Jack M. Sawyer



2009.2.209.1,.2

Steuben Glass Works, Inc., USA

Pair of Dessert Cups, circa 1910-1920

Jadeite opaline glass, 1: 3 7/8 x 4 1/2 in.; 2: 4 x 4 1/2 in.

Gift of Jack M. Sawyer



2009.2.217

Steuben Glass Works, Inc., USA

Candlestick, circa 1900-1920

Blown nonleaded glass, 14 3/4 x 7 1/4 (diam. at base) in.

Gift of Jack M. Sawyer



Steuben Glass Works at NOMA

2009.2.290

Steuben Glass Works, Inc., USA

Fan Vase, circa 1920-1930

Nonleaded roseline and opaque white glass, 8 3/8 x 4 (diam. at foot) x 7 (diam. at lip) in.

Gift of Jack M. Sawyer



2009.2.308

Steuben Glass Works, Inc. (probably), USA

Two-Handled Vase, circa 1930-1940

Nonleaded mold-blown clear glass, 10 5/8 x 7 (diam. at lip) in.

Gift of Jack M. Sawyer



2009.2.339

Steuben Glass Works, Inc., USA

Tripodal Bowl: Cluthra, circa 1930

Leaded green cluthra glass, 3 1/4 x 7 1/8 (diam. at mouth) in.

Gift of Jack M. Sawyer



2009.2.363

Steuben Glass Works, Inc., USA

Vase in the form of a Mushroom, circa 1930

Nonleaded glass blown, 3 3/8 x 4 3/4 (diam. at lip) in.

Gift of Jack M. Sawyer



2009.2.398

Steuben Glass Works, Inc., USA

Steuben Fan Vase, circa 1920-1930

Leaded purple and clear blue glass: blown and tooled in shape of fan, 8 3/4 x 7 (diam. at lip) in.

Gift of Jack M. Sawyer



2009.151

Steuben Glass Works, Inc.; Muehling, Ted, USA

Double Old Fashion: Tortoise, circa 1985

Colorless lead glass: blown, tooled and cut, 4 1/2 in.

Gift of Chet and Janie Coles



Steuben Glass Works at NOMA

U.2011.1

Steuben Glass Works, Inc., USA

Martini Glass, n.d.

Glass, 10 1/4 x 2 3/4 (diam. at base) x 2 (diam. at lip) in.

New Orleans Museum of Art: Gift of an anonymous donor



U.2011.2

Steuben Glass Works, Inc., USA

Wine Glass, n.d.

Glass, 7 7/8 x 3 3/8 (diam. at base) x 5 (diam. at lip) in.

New Orleans Museum of Art: Gift of an anonymous donor



U.2011.3

Steuben Glass Works, Inc., USA

Champagne Flute, n.d.

Glass, 9 1/4 x 2 7/8 (diam. at base) x 3 1/8 (diam. at lip) in.

New Orleans Museum of Art: Gift of an anonymous donor



2011.8.a-h

Steuben Glass Works, Inc.; designed by George Thompson; engraved design by Zevi BI

The Thousand and One Nights Sculpture, 1974

Colorless lead glass: cast, cut, engraved and polished, mounted in Sterling Silver stand, 11 x 7 x 6 1/2 in.

Gift of Dr. and Mrs. Isidore Cohn, Jr.



U.2012.65

Steuben Glass Works, Inc., USA

Bowl, 20th century

Glass,

Gift of an anonymous donor

